

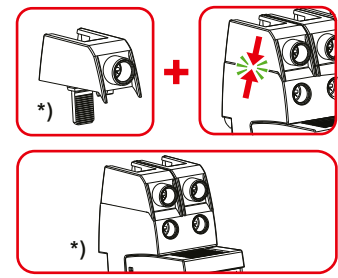
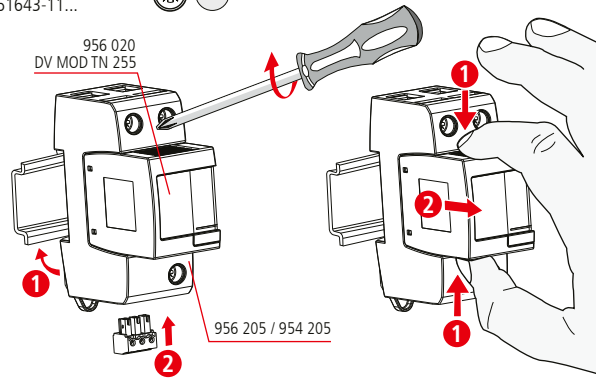
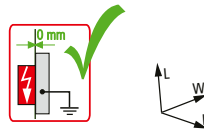
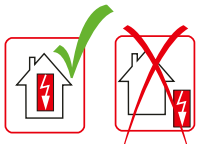
**DEHNventil modular DV M2 TN 255 FM**

- DE Einbauanleitung
- GB Installation instructions
- IT Istruzioni di montaggio
- FR Instructions de montage
- NL Montagehandleiding
- ES Instrucciones de montaje
- PT Instruções de montagem
- DK Monteringsvejledning
- SE Monteringsanvisning
- FI Asennusohje
- GR Οδηγίες συναρμολόγησης
- PL Instrukcja montażu
- CZ Návod k montáži
- TR Montaj kılavuzu
- RU Инструкция по монтажу
- CN 安装说明
- HU Szerelési útmutató
- JP 設置説明書



I+II+III IEC 61643-11...  
1+2+3 EN 61643-11...

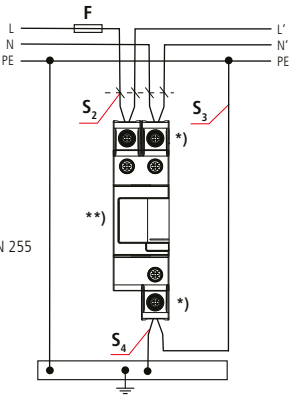
PZ 2 (4 Nm)



\*) **Optional** available, **STAK25** (Part No. 952 589) for serial connection  
\*) **Optional** erhältlich, **STAK25** (Art.-Nr. 952 589) für serielle Verdrahtung

DV M2 TN 255 FM	
$U_N / \text{Tot.} \pm 10\%$	230 / 400 V (50/60 Hz)
$U_C$	255 V (50/60 Hz)
$I_N$	50 kA <sub>rms</sub>
$I_{SCCR}$	50 kA <sub>rms</sub>
$I_{imp} 10/350 \mu s$	25 kA (L/N $\Rightarrow$ PE); 50 kA (L1+N $\Rightarrow$ PE)
$I_n 8/20 \mu s$	25 kA (L/N $\Rightarrow$ PE); 50 kA (L1+N $\Rightarrow$ PE)
$U_{OC}$	6 kV
max. $I_{sc}^{1)}$	100 A gG
max. $I_{sc}^{2)}$	250 A gG
$\theta$	-40°C ... +80°C (... +60°C <sup>?)</sup> )
$I_{PE}$	<< 10 $\mu$ A
$\Phi$	5% ... 95%
IP <sup>3)</sup>	20
L x W x H	90 mm x 36 mm x 66 mm

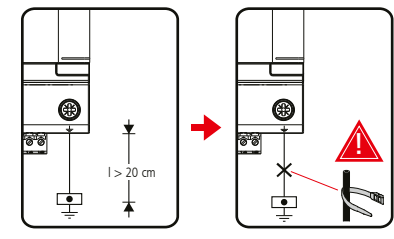
1) TN



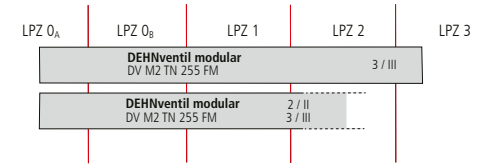
\*) 3 x STAK25  
\*\*) DV MOD TN 255

DEHNventil modular DV M2 TN 255 FM	
F	$F \leq 100 \text{ A gG}$
F	$F > 100 \text{ A gG}$

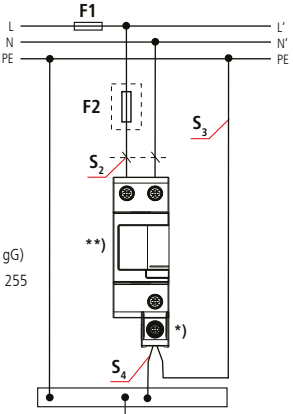
F A gG	S <sub>2</sub> / mm <sup>2</sup>	S <sub>3</sub> / mm <sup>2</sup>	S <sub>4</sub> / mm <sup>2</sup>
25	6	16	16
35	6	16	16
40	6	16	16
50	10	16	16
63	10	16	16
80	16	16	16
100	25	16	16



	16 mm	16 mm	16 mm
min. $\square$ L1, L2, L3, N, PE, $\downarrow$	6 mm <sup>2</sup>		
max. $\square$ L1, L2, L3, N, PE, $\downarrow$	25 mm <sup>2</sup> *)	35 mm <sup>2</sup>	
$\square$ $\Delta$	16 mm <sup>2</sup> Cu $\geq 15.5$ mm		



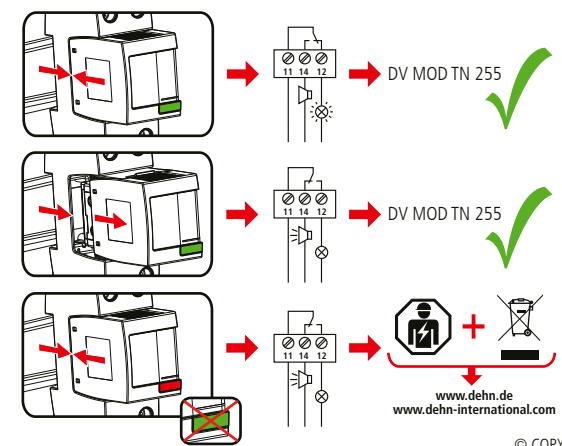
2) TN



\*) 1 x STAK25 (F1  $\leq$  160 A gG)  
\*\*) DV MOD TN 255

DEHNventil modular DV M2 TN 255 FM	
F1	$F1 > 250 \text{ A gG}$
F1	$F2 \leq 250 \text{ A gG}$
F1	$F1 \leq 250 \text{ A gG}$
F1	$F1 \leq 160 \text{ A gG}$ STAK25
F1	$F1 \geq 200 \text{ A gG}$

F1 A gG	S <sub>2</sub> / mm <sup>2</sup>	S <sub>3</sub> / mm <sup>2</sup>	S <sub>4</sub> / mm <sup>2</sup>	F2 A gG
25	6	16	16	---
35	6	16	16	---
40	6	16	16	---
50	6	16	16	---
63	10	16	16	---
80	10	16	16	---
100	16	16	16	---
125	16	16	16	---
160	16	16	16	---
200	25	25	25	---
250	25	25	25	---
>250	25	25	25	250



DEHNventil modular DV M2 TN 255 FM	
$U_N / I_N$	AC: 250 V / 0.5 A
	DC: 250 V / 0.1 A 125 V / 0.2 A 75 V / 0.5 A
	max. 1.5 mm <sup>2</sup>

