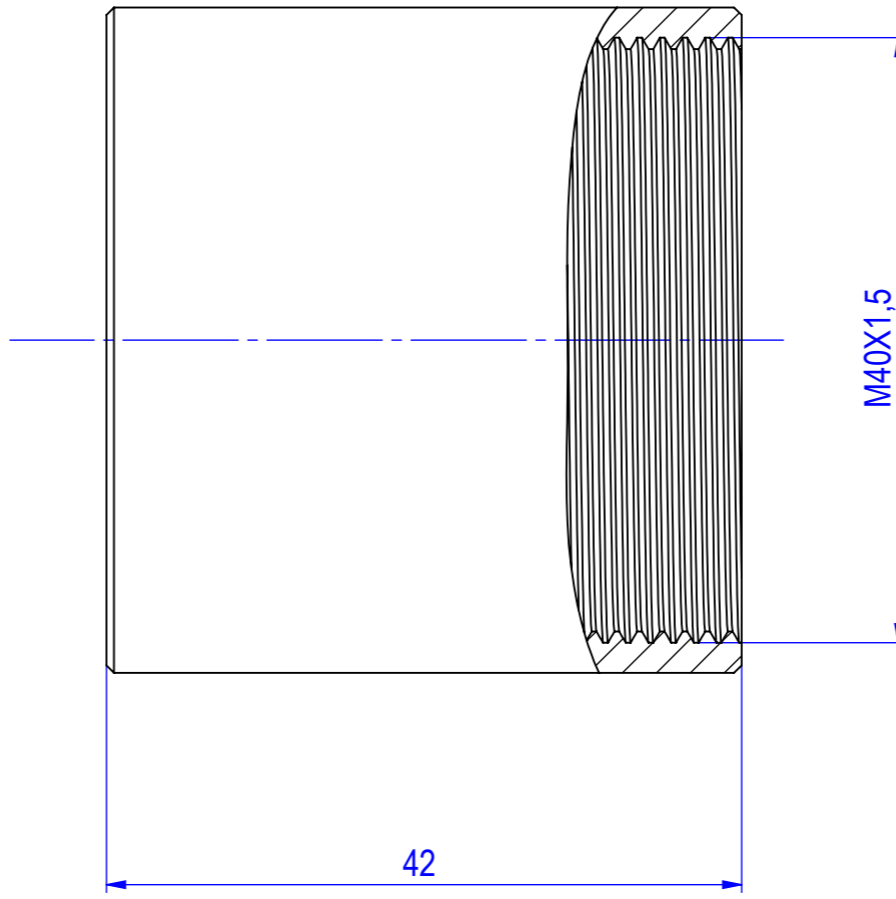
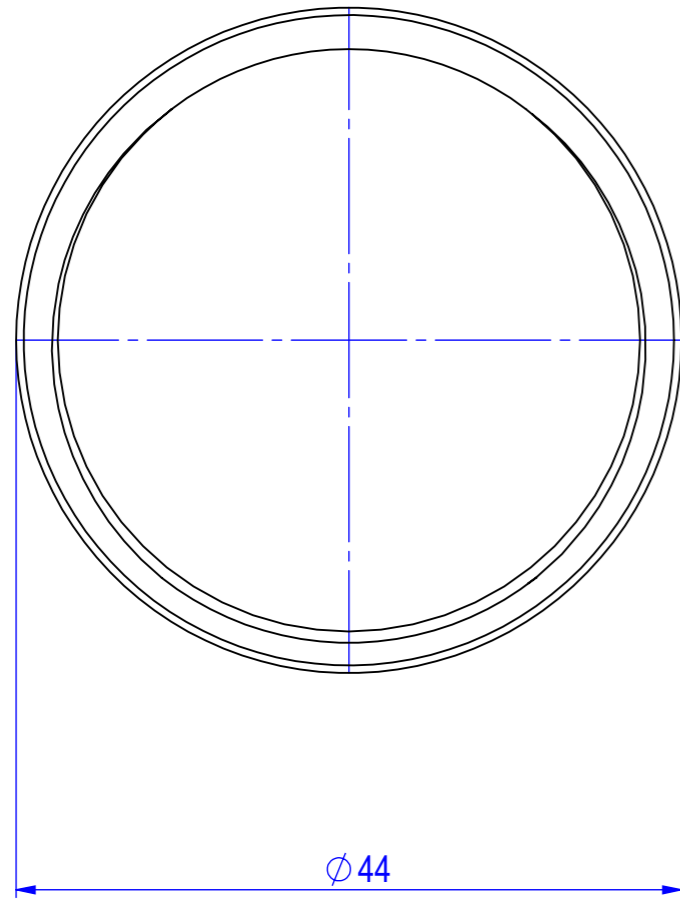


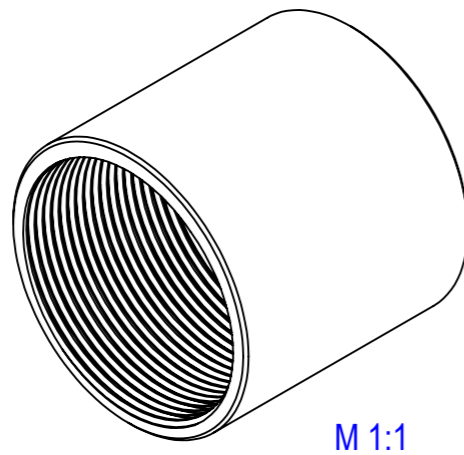
**Gewindemuffe-IEC ; M40X1,5 ; AL**  
**srew socket -IEC**



Werkstoff:  
material: Aluminium 3.3206 EN AW-6060 T5

Oberfläche:  
surface: blank bare


theor. Gewicht:  
theor. weight: ca. 35 gr/St.  
app. 35 gr./ea.



M 1:1

zur geschraubten, geraden Stoßstellenverbindung von zwei Gewinderohren-IEC  
 for screwed, straight joint connecting of two threaded pipes IEC

zur Verbindung von Gewinderohr-IEC und Gewindebogen-IEC  
 for connecting threaded pipe IEC and thread bow IEC

		Alle Maßangaben in [mm]	All dimensions in [mm]	Maßstab Scale	2:1
geprüft / approved:		Benennung <b>Gewindemuffe-IEC, Aluminium, M40X1,5</b>			
Name	Datum/Date	Title screw socket-IEC, aluminium, M40X1,5			
joerg-adams	19.07.2016	Modellnummer / Model no.		CAD-ID	
gezeichnet / drawn by:		<b>IEGM 40 AL</b>		<b>160685</b>	
Name	Datum/Date	Technische Änderungen vorbehalten / Subject to technical alteration			
		NX-Norm			
		 <b>NIEDAX GROUP</b>		Fintech GmbH, Asbacherstraße 141 D-53545 Linz / Rhein www.fintech-gruppe.de	