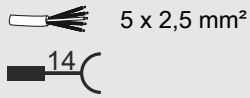


# INSTRUCTION

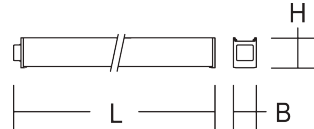
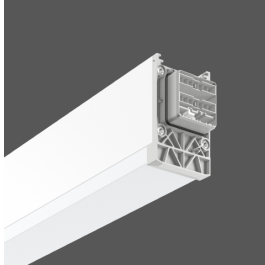
LINEDO  
9523OH.832.476.004



≈ 220 - 240 V 0/50/60 Hz IP 54 IK04



Umgebungstemperatur /  
temperature ambiante  
=> -25 °C ... + 40 °C



L 2291, B 58, H 91



LED



5,25 kg

$\Phi_{\text{h}}$  [lm]

17700

$P_{\text{h}}$  [W]

137

$P_{\text{b}}$

4 x 19,7 W

CCT [K]

3000

CRI

80

RG  $\text{\textcircled{h}}$

RG 1

EEK  $\text{\textcircled{h}}$

A++

EEK  $\text{\textcircled{h}}$

A++



5 A / 900  $\mu$ s

$B_{10}$  [St.]

18

$B_{16}$  [St.]

32

$C_{10}$  [St.]

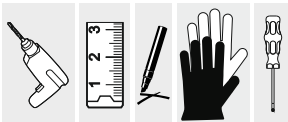
34

$C_{16}$  [St.]

54

$P_f$

0,98



INSTRUCTION  
WARTUNGSPLAN/  
MAINTENANCE  
SCHEDULE

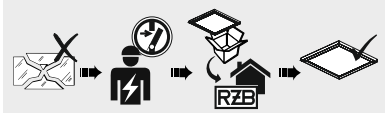


DIN EN 61340-5-1



EN 12464

EN 13201



EN 12464

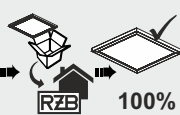
EN 13201



<100%



INSTRUCTION  
WARTUNGSPLAN/  
MAINTENANCE  
SCHEDULE

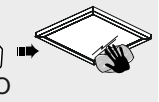


100%

EN 12464

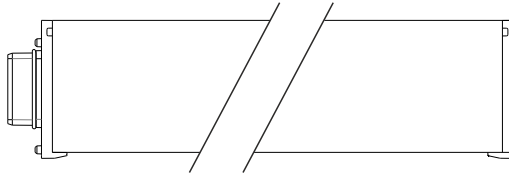


H<sub>2</sub>O





1



2a

	L	X*
4547 mm	≤ 4500 mm	≤ 60000 mm
2291 mm	≤ 2270 mm	≤ 50000 mm

\* R<sub>PE</sub> < 0,5 Ω  
EN 60598

2b

	L	X*
4547 mm	≤ 4500 mm	≤ 60000 mm
2291 mm	≤ 2270 mm	≤ 50000 mm

\* R<sub>PE</sub> < 0,5 Ω  
EN 60598

2c

	L	X*
4547 mm	≤ 2200 mm	≤ 60000 mm
2291 mm	≤ 1100 mm	≤ 50000 mm

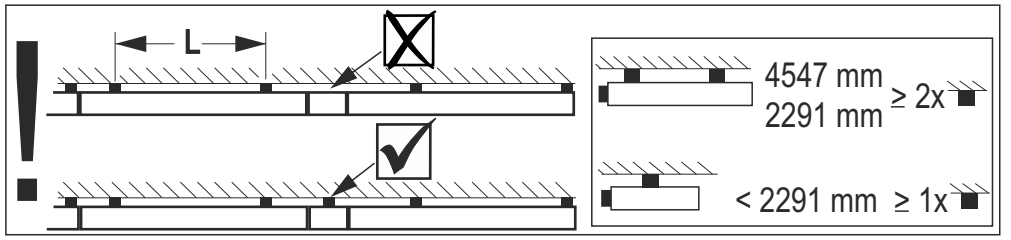
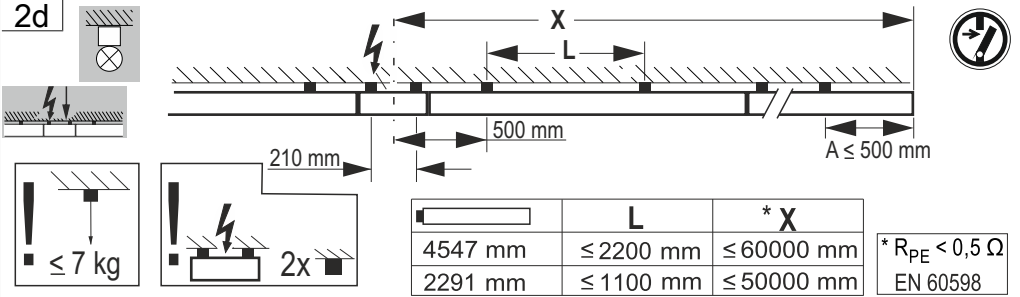
\* R<sub>PE</sub> < 0,5 Ω  
EN 60598

4547 mm  
2291 mm ≥ 2x

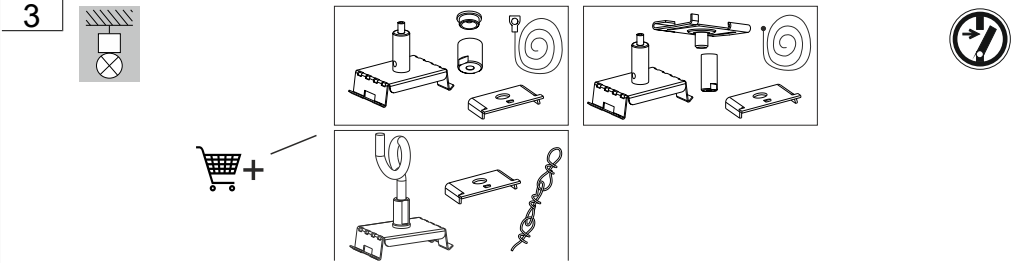
4547 mm  
2291 mm ≥ 1x



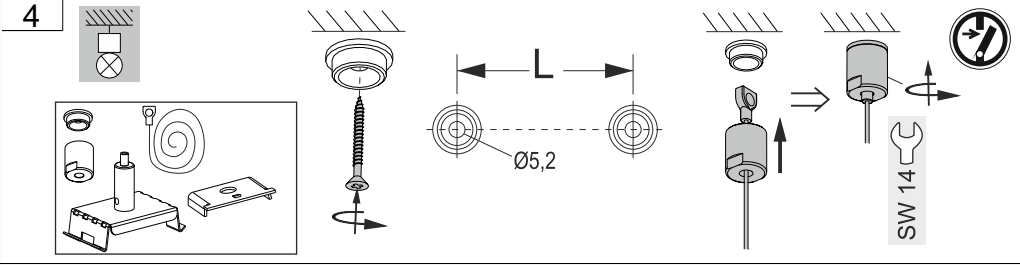
2d



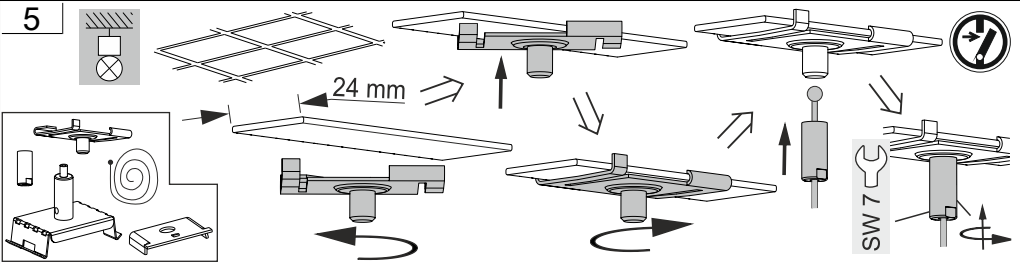
3



4



5





**6a**

**6b**

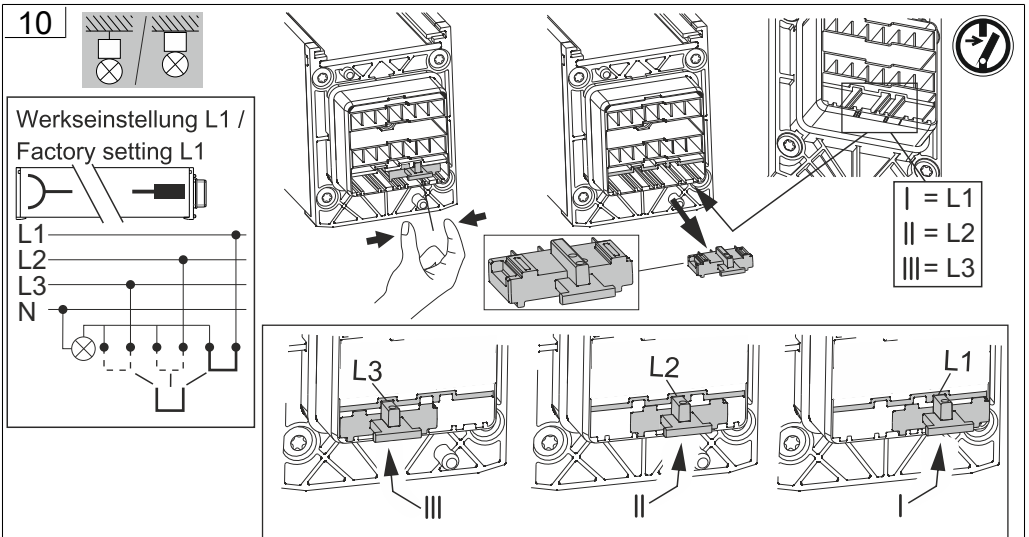
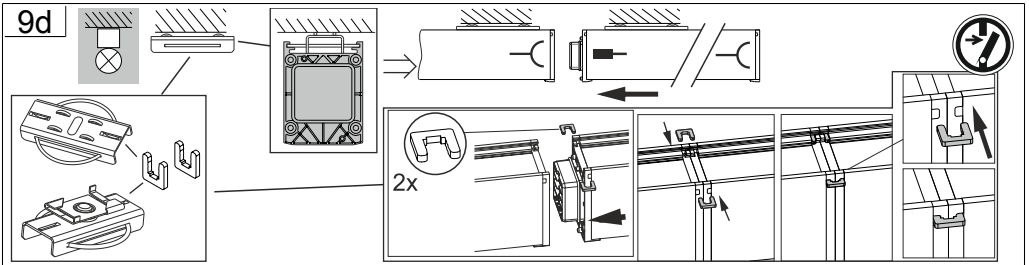
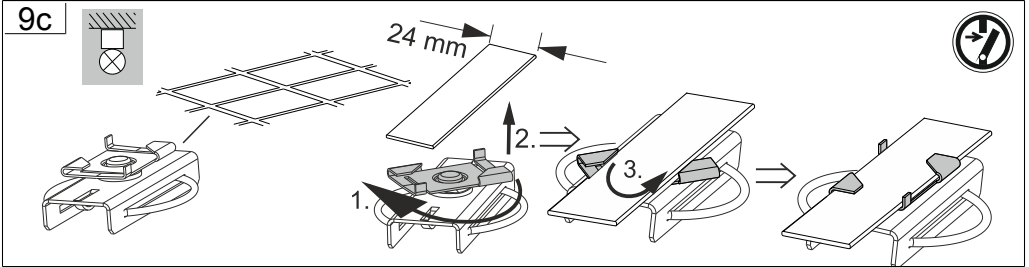
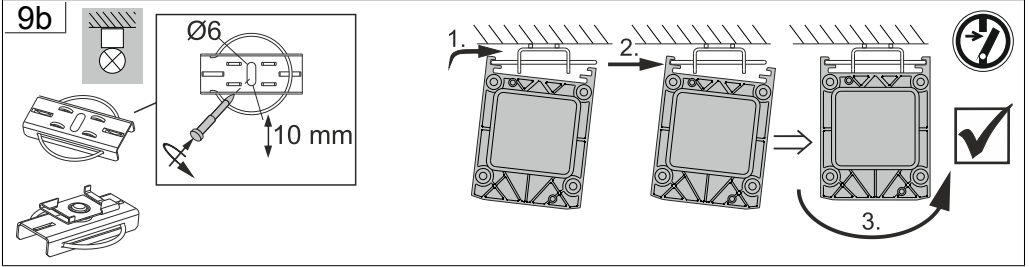
**7**

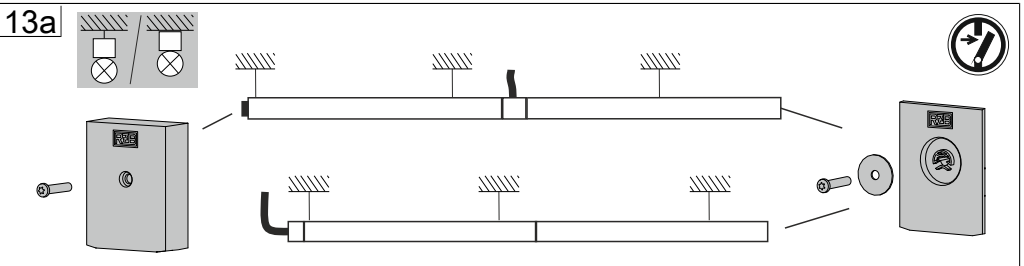
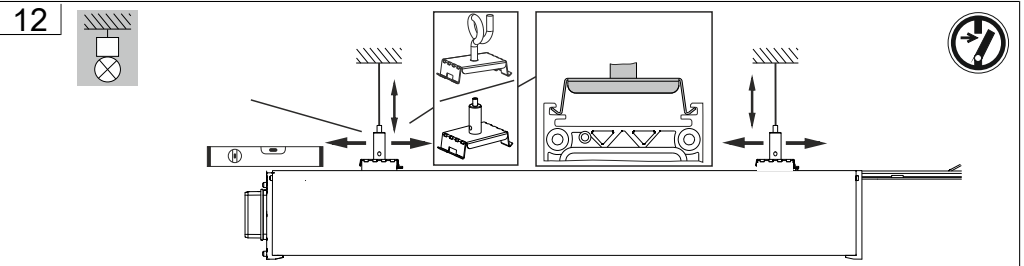
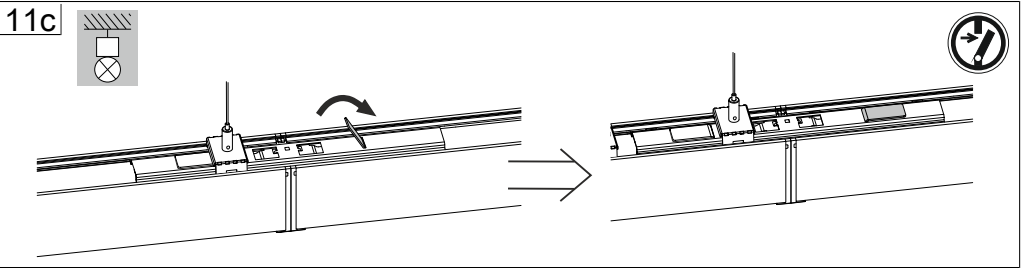
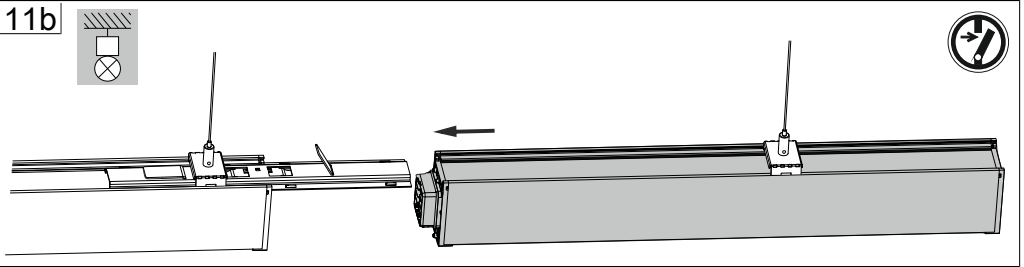
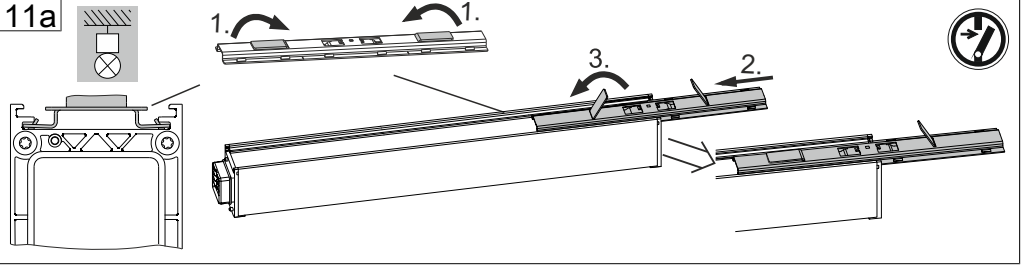
**8**

**9a**

# INSTRUCTION

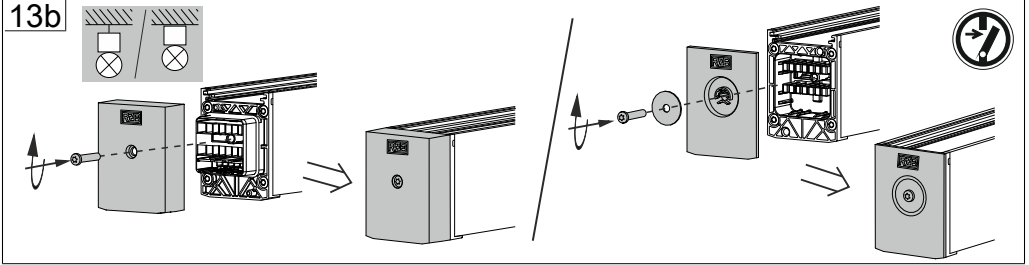
95230H.832.476.004



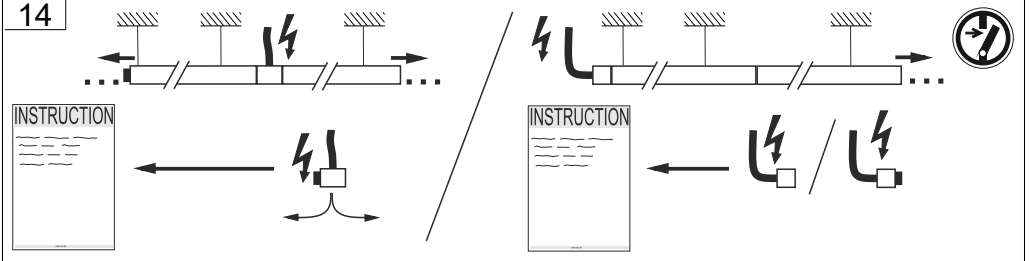




13b



14





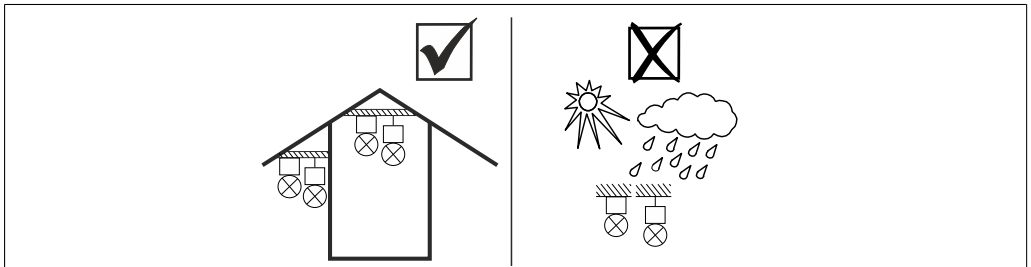
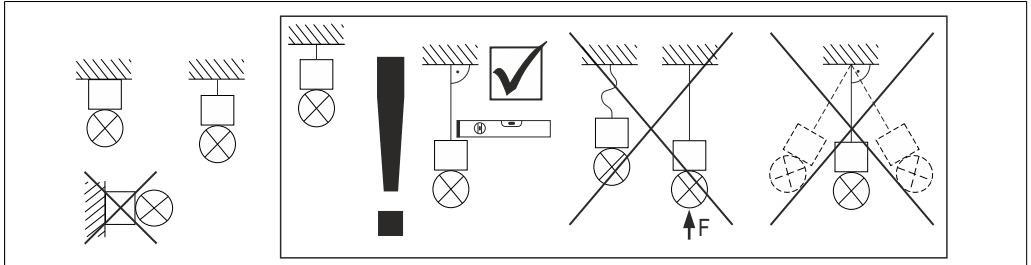
Bei Fragen zu unseren Symbolen,  
besuchen Sie folgende Webseite:

If you have any questions about our  
signs, visit the following website:



[www.rzb.de/fileadmin/assets/downloads/PDF/RZB\\_Symbolklaerung.pdf](http://www.rzb.de/fileadmin/assets/downloads/PDF/RZB_Symbolklaerung.pdf)

	Pendelmontage / Pendant mounting Einspeisung von der Seite / Feed from the side		Stecker / Plug
	Deckenmontage / Ceiling mounting Einspeisung von der Seite / Feed from the side		Buchse / Socket
	Pendelmontage / Pendant mounting Einspeisung von Oben / Feed from above		Pendelmontage / Pendant mounting
	Deckenmontage / Ceiling mounting Einspeisung von Oben / Feed from above		Deckenmontage / Ceiling mounting



**Hinweis zum Einsatz von Leuchten mit  $\nabla$ -Kennzeichnung nach EN 60598-2-24**

**Reference for application of lumiaires with  $\nabla$ - marking according to EN 60598-2-24**

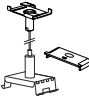

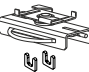
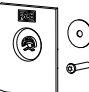
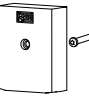

	IP 4x Umgebung ohne Staubablagerung Environment without dust deposit
	IP 5x Umgebung mit nicht elektrisch leitender Staubablagerung Environment with non-electrically conductive dust deposit
	IP 6x Umgebung mit elektrisch leitender Staubablagerung Environment with electrically conductive dust deposit





	982678.002	Einspeisung Feed	L 312, B 58, H 76	630 g
	982678.002.1	Einspeisung Feed	L 330, B 58, H 76	728 g
	982698.002	Einspeisung Feed	L 330, B 58, H 76	850 g
	982698.002.1	Einspeisung Feed	L 312, B 58, H 76	850 g
	982698.002.2	Einspeisung Feed	L 349, B 58, H 76	850 g
	982661.000	Pendelset Pendant kit	, LP 1500	56 g
	982662.000	Pendelset Pendant kit	, LP 1500	240 g
	982663.000	Befestigungsset Fixture	L 33, B 54,	63 g
	982664.000	Befestigungsset Fixture	L 33, B 54,	39,1 g
	982665.000	Pendelset Pendant kit	, LP 1500	80 g
	982717.000	Pendelset Pendant kit	, LP 5000	190 g
	982718.000	Pendelset Pendant kit	L 54, B 30, H 14, LP 5000	240 g



	982719.000	Pendelset Pendant kit	L 54, B 30, H 42, LP 5000	270 g
	982580.010	Deckenmontageset Ceiling surface mounting kit	L 70, B 28, H 16	44 g
	982666.000	Befestigungsset Fixture	L 70, B 54, H 22	25 g
	982679.009	Endkappe End cap	L 16, B 58, H 91	26,5 g
	982701.009	Endkappe End cap	L 23, B 58, H 91	36 g
	982680.000	Verbinder Connector	L 300, B 48, H 9	181 g



RZB - Rudolf Zimmermann, Bamberg GmbH  
Rheinstraße 16  
96052 Bamberg

☎ 0951/7909-0  
Fax: 0951/7909-198

E-mail: [info@rzb-leuchten.de](mailto:info@rzb-leuchten.de)